



【Online】 Knowledge Co-Creation Program (Group & Region Focus)

GENERAL INFORMATION ON

**SOCIAL PARTICIPATION OF PERSONS WITH DISABILITIES
THROUGH A COMMUNITY-BASED INCLUSIVE APPROACH (B)**

**課題別研修「地域に根ざしたインクルーシブアプローチによる
障害者の社会参加 (B)」**

JFY 2021

Course No. 202006466J001

Course Period : From January 26 to March 9, 2022

This information pertains to one of the JICA Knowledge Co-Creation Program (Group & Region Focus) of the Japan International Cooperation Agency (JICA), which shall be implemented as part of the Official Development Assistance of the Government of Japan based on bilateral agreement between both Governments.

'JICA Knowledge Co-Creation (KCC) Program

The Japanese Cabinet released the Development Cooperation Charter in February 2015, which stated, *“In its development cooperation, Japan has maintained the spirit of jointly creating things that suit partner countries while respecting ownership, intentions and intrinsic characteristics of the country concerned based on a field-oriented approach through dialogue and collaboration. It has also maintained the approach of building reciprocal relationships with developing countries in which both sides learn from each other and grow and develop together.”* JICA believes that this 'Knowledge Co-Creation Program' will serve as a foundation of mutual learning process.

I. Concept

Background

The Convention on the Rights of Persons with Disabilities became effective in May 2008. Article 9 on Accessibility states "to enable persons with disabilities to live independently and participate fully in all aspects of life, States Parties shall take appropriate measures to ensure to persons with disabilities access, on an equal basis with others, to the physical environment, to transportation, to information and communications, including information and communications technologies and systems, and to other facilities and services open or provided to the public, both in urban and in rural areas". Article 19 on independent living in the community states that States Parties recognize the equal right of all persons with disabilities to live in the community, with choices equal to others, and shall take effective and appropriate measures to facilitate full enjoyment by persons with disabilities of this right and their full inclusion and participation in the community. Article 27 on Work and Employment also states, "States Parties recognize the right of persons with disabilities to work, on an equal basis with others; this includes the right to the opportunity to gain a living by work freely chosen or accepted in a labor market and work environment that is open, inclusive and accessible to persons with disabilities".

The World Report on Disability, issued by the World Bank and World Health Organization in 2011, identifies "less economic participation" as one of the areas which affects the lives of persons of disabilities. It reported that "A recent study from the Organization for Economic Co-operation and Development (OECD) showed that in 27 countries working-age persons with disabilities experienced significant labor market disadvantage and worse labor market outcomes than working-age persons without disabilities. The Incheon Strategy to "Make the Right Real" for Persons with Disabilities in Asia and the Pacific, for the new Asian and Pacific Decade of Persons with Disabilities, 2013–2022, includes a goal to reduce poverty and enhance work and employment prospects.

With the consideration of the above-mentioned international policy frameworks, JICA intends to promote the participation and livelihood of persons with disabilities in their communities around the World. Based on the Convention as well as the World Report and other frameworks, JICA Okinawa Center has initiated this training program aiming to promote the social participation and livelihood of persons with disabilities by utilizing local resources and networking systems among the national and local governments, NGOs, private enterprises and organizations of persons with disabilities in Japan.

For what?

This program is designed for organizations (Governments, NGOs, and DPOs (Disabled People's Organizations) in charge of promotion of the social participation and

livelihood of persons with disabilities in their community through utilizing local resources and enhancement of network functions.

For whom?

This program is designed for those who are in charge of promotion of the social participation and livelihood of persons with disabilities in Governments, NGOs and DPOs.

How?

To achieve the purpose, this program provides participants with the opportunity to acquire the knowledge and information on promotion of the social participation and livelihood of persons with disabilities through case studies, visiting local communities, and discussion among participating countries and Japan.

II. Description

1. Title (Course No.):

Social Participation of Persons with Disabilities through a Community-Based Inclusive Approach (B) (202006466J001)

2. Course Period

January 26 to March 9, 2022

3. Target Regions or Countries

Indonesia, Mongolia, Pakistan, Sri Lanka, Tajikistan, Thailand

4. Eligible / Target Organization

This program is designed for governments (central and local level), NGOs, and Persons with Disabilities' Organizations (DPOs) responsible for promotion of the social participation and livelihood of persons with disabilities. In addition, this program aims to enhance a relationship among the government officials, NGOs and DPOs to facilitate the activities of each organization. Thus, participating countries are expected to nominate participants from each type of related organizations in a community such as a combination of government and NGO/DPOs.

5. Course Capacity (Upper limit of Participants)

6 participants

6. Language to be used in this program

English

7. Course Objective

Organizations (Government, NGOs, and DPOs) in charge of social participation for persons with disabilities will develop plans or strategy and initiate new actions for promoting the social participation of persons with disabilities through livelihood,

independent living and other support programs, based on learning from experiences of Okinawa, Japan and other countries.

8. Overall Goal

Social participation of persons with disabilities will be increased by the effective functioning of livelihood and other inclusive support programs and network system for persons with disabilities in the communities of respective countries.

9. Expected Module Output and Contents

This program consists of the following components. Details on each component are given below:

(1) Preliminary Phase	
<i>Participating organizations make required preparation for the Program</i>	
Expected Module Output	Activities
1. Job Report 2. Understanding the outline of social welfare service in Japan	1. Formulation and submission of Job Report in accordance with Annex. 2. Self-study by reference of the websites as below a) Ministry of Health , Labor and Welfare http://www.mhlw.go.jp/english/index.html b) The Basic Law for Persons with Disabilities http://www8.cao.go.jp/shougai/english/law/no84.html c) Services and Supports for Persons with Disabilities Act http://www.cas.go.jp/jp/seisaku/hourei/data/sspd_2.pdf

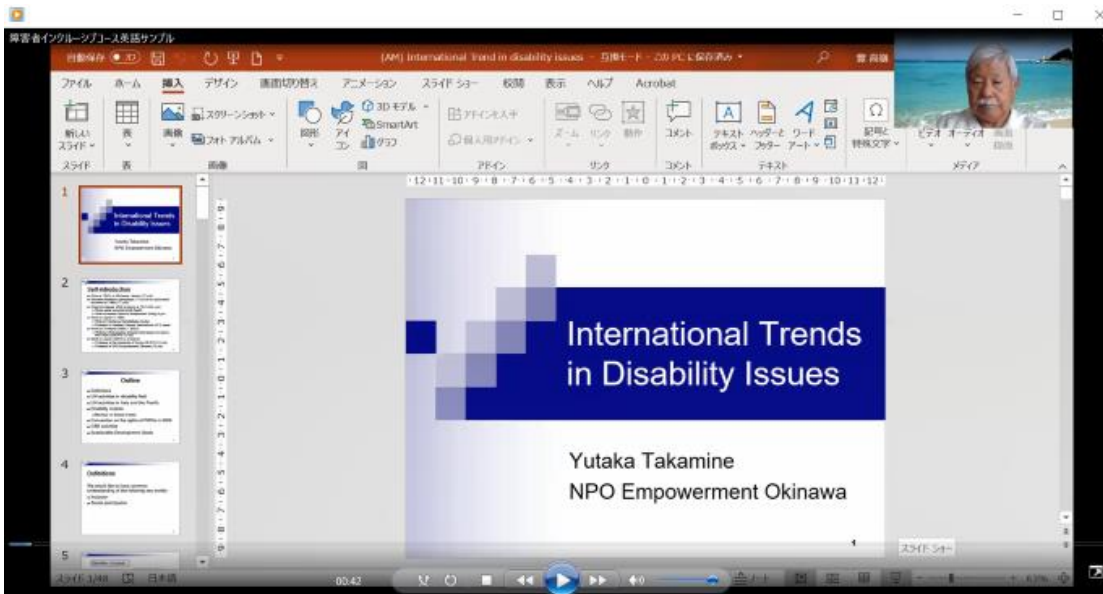
(2) Core Phase	
Expected Module Output	Subjects/Agendas
1. To analyze the roles, functions and network system of government agencies, NGOs and DPOs through the case studies of Okinawa Prefecture and Japan, and clarify the issues addressed by participants' organization.	1. Overview of world trends in the disability field, including CRPD and CBR guidelines 2. Outline of welfare policy and employment support measures in Japan 3. Activities of Disabled Persons' Organization in Okinawa and their roles in the promotion of social participation.
2. To analyze the effective usage of community resources to achieve social participation of persons with disabilities in Japan, and explain the applicable measures in respective countries.	1. Promotional activities of social participation of persons with disabilities by their organizations, NGOs and local enterprises (specific approach towards different types of disability, adaptation in various types of business) 2. Community- based inclusive approach model: a local city model linking a city, NGOs and enterprises

<p>3. To formulate a draft of action plan for an effective and feasible social participation program, using the knowledge and skills gained throughout the program</p>	<ol style="list-style-type: none"> 1. Drafting action plans for effective and feasible social participation programs for persons with disabilities and sharing them among the participants 2. Report on this program to participants' organization for sharing useful information 3. Discussion and review on the action plan 4. Implementation of the activities re-planned by the organization
--	--

【Contents of the Online Program】

***Please watch “Course Preview and Message from Course Leader, Prof. TAKAMINE Yutaka, President, Non-Profit Organization Empowerment Okinawa” (Youtube, 13 minutes)**

<https://youtu.be/V5DUIbhNLk8>



< Online Live Discussion Session >

Participants are requested to attend the following live discussion session through Zoom Video Communications.

1 session will be Two (2) or Three (3) hours.
Time will be fixed considering the time difference.

*This tentative schedule may be subject to change.

- January 26 (Wed) : Self-introduction and Ice Breaking
- February 2 (Wed) : Review of 1st week. Job Report Presentation
- February 9 (Wed) : Review of 2nd week.
- February 16 (Wed) : Review of 3rd week.
- February 23 (Wed) : Review of 4th week.
- March 2 (Wed) : Review of 5th week.
- March 9 (Wed) : Action Plan Presentation

< Video Materials >

Participants are requested to see the following video materials through Youtube.

*Appropriately 30 minutes / 1 lecture / virtual visit

- 1st week

- (1) Lecture "The Life History of TAKAMINE Yutaka"
- (2) Lecture "International Trends in Disability Issues"
- (2) Lecture "Policy for Persons with Disabilities in Japan"
- (3) Lecture "Initiatives for the Welfare of Persons with Disabilities in Okinawa"
- (4) Lecture "Efforts to Support the Employment of Disabled People in Okinawa"

- 2nd week

- (1) Lecture "History and Activities of Okinawa Welfare Association of Persons with Visual Impairments"
- Virtual Visit "Okinawa Braille Library and Massage Center under the Welfare Association"
- (2) Virtual Visit "Person with Disability IT Support Center Okinawa under NPO Okinawa Association of Spinal Cord Injured Persons"
- (3) Virtual Visit "Okinawa Prefecture Information Center for Persons with Hearing Impairments"
- (4) Lecture "Intellectual Disability: History and Activities of Okinawa Prefecture Hand-in-Hand Nurturing Association"
- (5) Lecture "The Role of Naha City Welfare Center for Persons with Disabilities"
- Virtual Visit "Naha City Welfare Center for PWDs under the Naha City Welfare Association of Physically Disabled Persons"

- 3rd week

- (1) Lecture “The Overview of Hello Work (Public Employment Security Office) Naha”
Virtual Visit “Hello Work (Public Employment Security Office) Naha”
- (2) Lecture “The Work of Okinawa Vocational Center for Persons with Disabilities”
- (3) Lecture “Employment Support Center for Disabled Persons “Sawayaka””
Lecture “Overview of Naha City Job Supporter Program”
Virtual Visit “Employment Support Center "Sawayaka"”
- (4) Virtual Visit “Employment Support Center for Persons with Intellectual Disabilities
“Sotetsu””
- (5) Virtual Visit “Children's Development Support Center “Anemone””
- (6) Virtual Visit “Inclusive education - a case study of secondary school students”

- 4th week

- (1) Lecture “Art Activities of Persons with Disabilities”
- (2) Lecture “History, Current Situation and Challenges of Sports for People with Disabilities in Japan”
- (3) Lecture “Independent Living Movement in Okinawa”
- (4) Lecture “Okinawa Inclusive Society Ordinance”
- (5) Virtual Visit “Okinawa Independent Living Center "Iruka (=Dolphin)””
- (6) Virtual Visit “COVID-19 Countermeasures of Independent Living Center Iruka”
- (7) Lecture “International Cooperation of Independent Living Center Iruka”

- 5th week

- (1) Lecture “World and Japanese Trends in Barrier-free”
- (2) Lecture “Barrier-free Activities of Persons with Disabilities: Past, Present and the Future”
- (3) Lecture “Barrier-free Tourism in Okinawa”
- (4) Virtual Visit “Barrier-free Check at Bus Terminal, Non-step Bus Ride, Monorail station, Monorail Ride, Kokusai Main Street”
- (5) Virtual Visit “Barrier-free Tourism Spot “Okinawa Churaumi Aquarium in Ocean EXPO Park””



III. Conditions and Procedures for Application

1. Expectations from the Participating Organizations:

- (1) This program is designed primarily for organizations that intend to address specific issues or problems identified in their operation. Participating organizations are expected to use the project for those specific purposes.
- (2) This program is enriched with contents and facilitation schemes specially developed in collaboration with relevant prominent organizations in Japan. These special features enable the project to meet specific requirements of applying organizations and effectively facilitate them toward solutions for the issues and problems.

2. Nominee Qualifications:

Applying Organizations are expected to select nominees who meet the following qualifications.

(1) Essential Qualifications

- 1) Current Duties :
be engaged in promoting social participation of persons with disabilities.
- 2) Experience in the relevant field :
have more than three years of working experience in promoting social participation including livelihood or independent living of persons with disabilities
- 3) Educational Background :
be a graduate of university or equivalent
- 4) Language:
have a competent command of spoken and written English, since this training includes active participation in discussions among participants. Please attach an official certificate for English ability such as TOEFL, TOEIC, if possible)
- 5) PC with a web camera and internet access :
be requested to arrange a PC with a web camera for online live sessions and with internet access to Youtube and Zoom.

(2) Recommendable Qualifications

Personnel connected with JICA experts/ volunteers are preferable.

※Persons with disabilities are encouraged to apply.

3. Required Documents for Application

(1) Application Form:

The Application Form is available at respective country's **JICA office (or the**

Embassy of Japan).

* If you have any difficulties/disabilities which require assistance, please specify necessary assistances in the Medical History (1-(d)) of the application forms. It may allow us (people concerned in this course) to prepare better logistics or alternatives.

(2) Questionnaire & Job Report:

to be submitted with Application Form. Formulate the report in accordance with 'ANNEX1, 2' of this General Information.

* **Application Form, Questionnaire and Job Report must be computer-printed, NOT handwritten.**

(3) Photocopy of passport:

to be submitted with the application form. If you do not possess it, you are requested to submit the photocopy of your official ID with clear description of Name, Date of birth, Nationality, and Sex.

(4) Nominee's English Score Sheet:

to be submitted with the application form. If you have any official documentation of English ability. (e.g., TOEFL, TOEIC, IELTS)

4. Procedures for Application and Selection :

(1) Submission of the Application Documents:

Closing date for applications:

Please confirm the local deadline with the JICA overseas office (or the Embassy of Japan).

All required material must arrive at **JICA Center in JAPAN** by **December 22, 2021.**

(2) Selection:

Primary screening is conducted at the JICA overseas office (or the embassy of Japan) after receiving official documents from your government. JICA Center will consult with concerned organizations in Japan in the process of final selection. Applying organizations with the best intentions to utilize the opportunity will be highly valued.

The Government of Japan will examine applicants who belong to the military or other military-related organizations and/or who are enlisted in the military, taking into consideration of their duties, positions in the organization and other relevant information in a comprehensive manner to be consistent with the Development Cooperation Charter of Japan.

(3) Notice of Acceptance

The JICA overseas office (or the Embassy of Japan) will notify the results **not later than January 5, 2022.**

5. Conditions for Attendance:

The participants of KCCP are required.

(1) to strictly adhere to the program schedule.

IV. Administrative Arrangements

1. Organizer:

(1) Name: JICA Okinawa Center (JICA Okinawa)

(2) Contact: Mr. YASUMOTO Takafumi (oictp@jica.go.jp)

2. Implementing Partner:

Non-Profit Organization Empowerment Okinawa

V. Other Information

1. For your Information

Information of Okinawa is available at following URLs.

- (1) Homepage of Urasoe city (where JICA Okinawa is located)

Urasoe city:

<http://honyaku.j-server.com/LUCURASOEC/ns/tl.cgi/http%3a//www.city.urasoe.lg.jp/?SLANG=ja&TLANG=en&XMODE=0&XCHARSET=utf-8&XJSID=0>

Basic information of Urasoe city is covered in English.

- (2) HP of Okinawa Prefecture:

<https://www.pref.okinawa.jp/site/chijiko/kohokoryu/foreign/english/index.html>

Basic information of Okinawa prefecture is covered (Urasoe city is one of the municipalities of Okinawa prefecture) in English.

- (3) HP of Okinawa Convention & Visitors Bureau:

<http://en.okinawastory.jp/>

- (4) YouTube channel of JICA Okinawa :

<https://www.youtube.com/user/jicaokinawa>

- (5) Facebook of JICA Okinawa :

<https://www.facebook.com/jicaokinawaaic/>

VI. ANNEX:

Annex 1

QUESTIONNAIRE FOR Social Participation of Persons with Disabilities through a Community-Based Inclusive Approach

Please fill out this questionnaire and submit with your Application Form. The Application Form without the filled questionnaire will be disqualified.

***Remarks: The Application Form, Questionnaire and Job Report must be computer-printed, not handwritten.**

Name: Mr. /Ms. _____
first name / middle name / last name

DISABILITY DATA

1. Do you have any disability? () NO () YES

If YES please continue to answer the following questions.

(a) Please describe your disabilities in details.

(If you are paraplegic or quadriplegic please identify the level of injury, e.g. C5 or T10)

(b) If you use any assistive device(s), please describe.

(c) For the participant using own wheelchair, please fill up the below:

- Type () Manual, collapsible
 () Manual, non- collapsible
 () Motorized with wet cell battery/
 () Motorized with wet cell battery /Sealed Type
 () Motorized with dry battery

(d) For the participants with a visual impairment or hearing impairment, please answer the following.

I need to use (please mark and fill space):

- () Enlarged print ---Font () and Size (points)
() Electronic Data-JAWS Screen Reading software (English)
() Electronic Data--Other software (English)
 (Please specify _____)
() Sign Language interpreter
() Hearing aids
() Others (please specify_____)

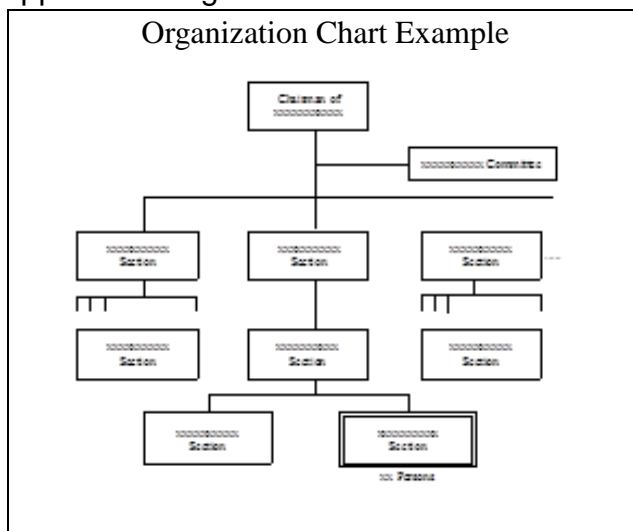
1. Job Report

Name:	Country:
country:	Population:

【Organization and Job Description】

1. Basic information of your organization.

*Append the organization chart with the attached paper.



Name of organization: _____

Type of your organization: () National Governmental
() Local Governmental
() Non-Governmental
() Private

Financial status of your organization:

() independent
() funded by _____
() subsidized by _____
() others (Clarify below.)

Number of employees: _____

Among them, the number of PWDs (Person with Disabilities) _____

Date of establishment: _____

2. Roles and functions of your organization

(1) Organization

(2) Your department/section

3. Activity in which you are engaged in your organization.

(1) Title of your position:

(2) Your responsibilities and daily job activities

(3) Current Issues/Constraints

(4) If you have any topics which you would like to discuss during the course, please describe them.

(5) Briefly describe the situation of social participation of persons with disabilities in your country, including accessibility, education, employment, independent living, the roles played by disabled persons' organizations (DPOs) and others

(6) Please answer the following questions.

A) Have your country ratified the Convention on the Rights of Persons with Disabilities? If yes, which year did she ratify?

B) Does your country have a legal quota for employment of PWDs? If yes what is the percentage?

C) Have you heard about Disability Equality Training (DET)? Is DET introduced in your country?

2. Self-study on social welfare services in Japan

In order to understand the outline of social welfare service in Japan, you are requested to self-study the websites below:

- a) Ministry of Health , Labor and Welfare
<http://www.mhlw.go.jp/english/index.html>

- b) The Basic Law for Persons with Disabilities
<http://www8.cao.go.jp/shougai/english/law/no84.html>

- c) Services and Supports for Persons with Disabilities Act
http://www.cas.go.jp/jp/seisaku/hourei/data/sspd_2.pdf

- d) Other information on the laws for persons with disabilities in Japan
http://www.unescapsdd.org/files/documents/DPC_Japan.doc

For Your Reference

JICA and Capacity Development

The key concept underpinning JICA operations since its establishment in 1974 has been the conviction that “capacity development” is central to the socioeconomic development of any country, regardless of the specific operational scheme one may be undertaking, i.e. expert assignments, development projects, development study projects, training programs, JOCV programs, etc.

Within this wide range of programs, Training Programs have long occupied an important place in JICA operations. Conducted in Japan, they provide partner countries with opportunities to acquire practical knowledge accumulated in Japanese society. Participants dispatched by partner countries might find useful knowledge and re-create their own knowledge for enhancement of their own capacity or that of the organization and society to which they belong.

About 460 pre-organized programs cover a wide range of professional fields, ranging from education, health, infrastructure, energy, trade and finance, to agriculture, rural development, gender mainstreaming, and environmental protection. A variety of programs and are being customized to address the specific needs of different target organizations, such as policy-making organizations, service provision organizations, as well as research and academic institutions. Some programs are organized to target a certain group of countries with similar developmental challenges.

Japanese Development Experience

Japan was the first non-Western country to successfully modernize its society and industrialize its economy. At the core of this process, which started more than 140 years ago, was the “*adopt and adapt*” concept by which a wide range of appropriate skills and knowledge have been imported from developed countries; these skills and knowledge have been adapted and/or improved using local skills, knowledge and initiatives. They finally became internalized in Japanese society to suit its local needs and conditions.

From engineering technology to production management methods, most of the know-how that has enabled Japan to become what it is today has emanated from this “*adoption and adaptation*” process, which, of course, has been accompanied by countless failures and errors behind the success stories. We presume that such experiences, both successful and unsuccessful, will be useful to our partners who are trying to address the challenges currently faced by developing countries.

However, it is rather challenging to share with our partners this whole body of Japan’s developmental experience. This difficulty has to do, in part, with the challenge of explaining a body of “tacit knowledge,” a type of knowledge that cannot fully be expressed in words or numbers. Adding to this difficulty are the social and cultural systems of Japan that vastly differ from those of other Western industrialized countries, and hence still remain unfamiliar to many partner countries. Simply stated, coming to Japan might be one way of overcoming such a cultural gap.

JICA, therefore, would like to invite as many leaders of partner countries as possible to come and visit us, to mingle with the Japanese people, and witness the advantages as well as the disadvantages of Japanese systems, so that integration of their findings might help them reach their developmental objectives.



CORRESPONDENCE

For enquiries and further information,
please contact the JICA office or the Embassy of Japan.

Further, address correspondence to:

JICA Okinawa Center (JICA OKINAWA)

Address: 1143-1 Aza-Maeda, Urasoe-Shi, Okinawa, 901-2552, Japan

TEL: +81-98-876-6000 FAX: +81-98-876-6014

<https://www.jica.go.jp/okinawa/english/office/index.html>